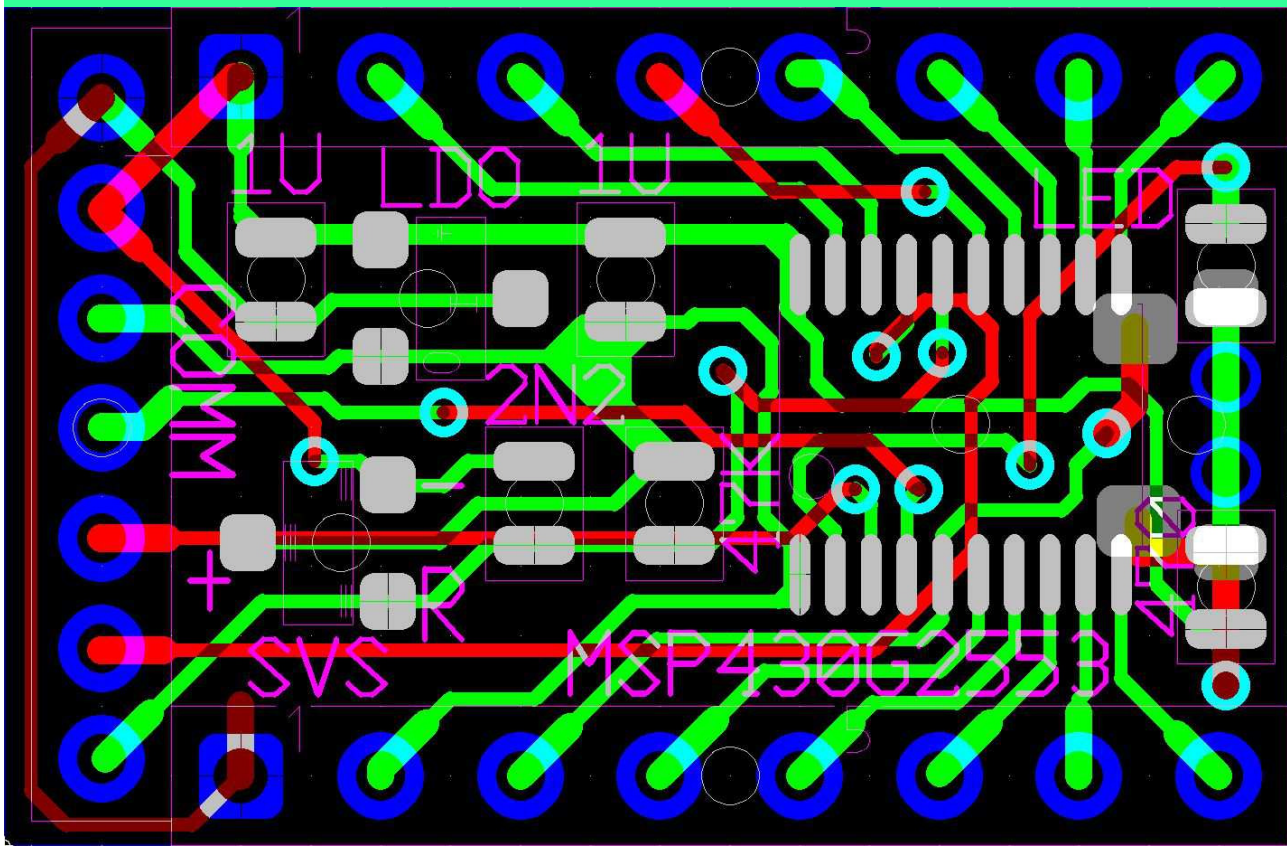
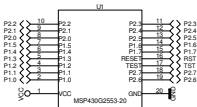
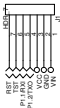


Micro Launchpad for MSP430G2553



size: 23,4 x 15.25mm

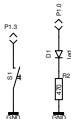
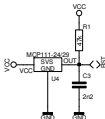
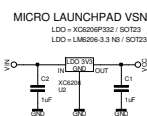
ONE LED, 1 SWITCH, 3V3 LDO, VOLTAGE SUPERVISOR 2V4 TO 3V

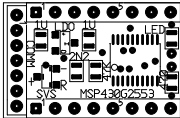


MICRO LAUNCHPAD VSN 2.0

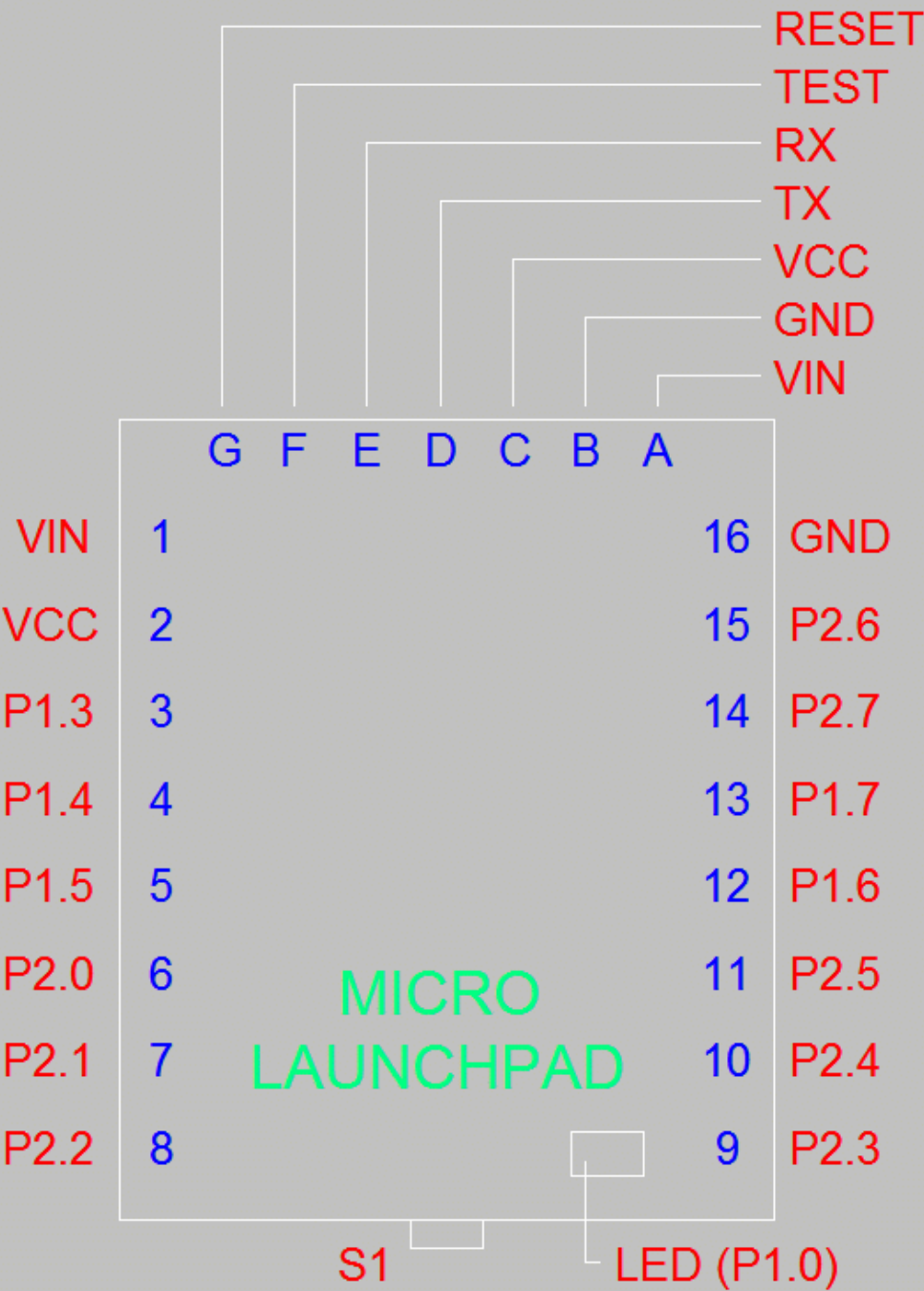
LDO = XC6206P332 / SOT23

LDO = LM6206-3.3 NS / SOT23

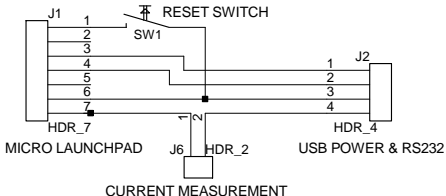




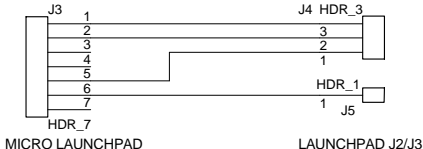
Micro MSP430 launchpad module connections

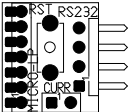


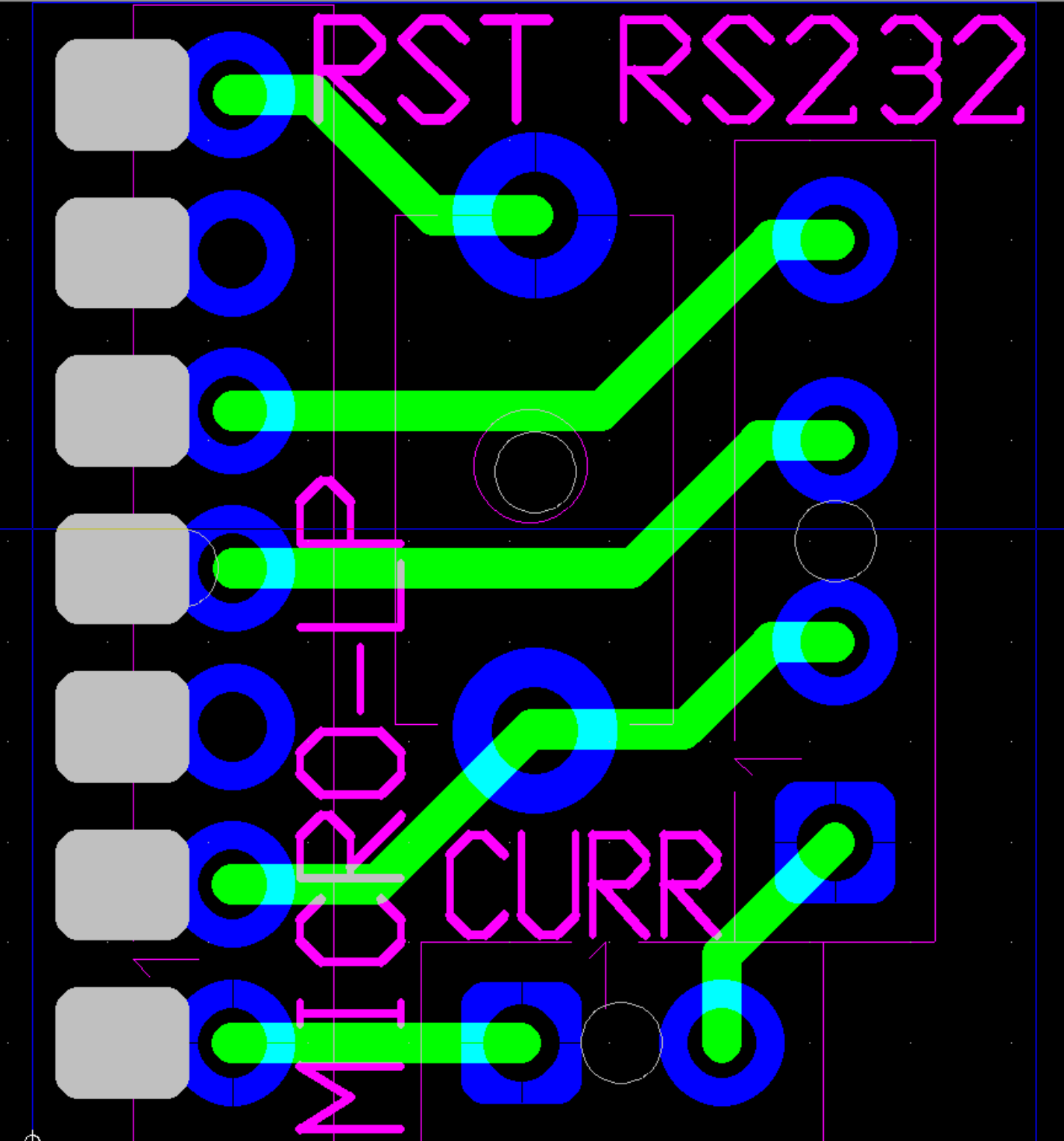
MICRO LAUNCHPAD INTERFACE BOARD



MICRO LAUNCHPAD PROGRAMMING CABLE

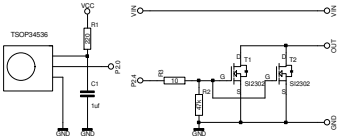


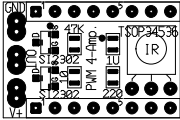




MICRO LAUNCHPAD EXTENSION 1 - VSN 0.0

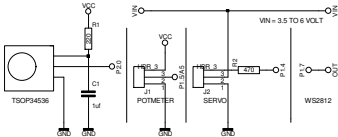
IR RECEIVER, 2X 2 AMP. MOSFET

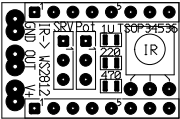




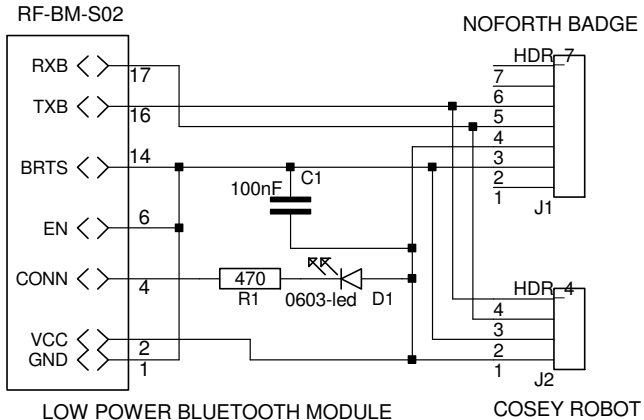
MICRO LAUNCHPAD EXTENSION 2 - VSN 0.0

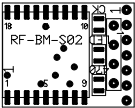
IR RECEIVER, ADC-IN, SERVO OUT, WS2812 OUT





WIRING FOR RF-BM-S02 MODULE





Low ESR Cap.Compatible Positive Voltage Regulators

■ GENERAL DESCRIPTION

The XC6206 series are highly precise, low power consumption, 3 terminal, positive voltage regulators manufactured using CMOS and laser trimming technologies. The series provides large currents with a significantly small dropout voltage.

The XC6206 consists of a current limiter circuit, a driver transistor, a precision reference voltage and an error correction circuit. The series is compatible with low ESR ceramic capacitors. The current limiter's foldback circuit operates as a short circuit protection as well as the output current limiter for the output pin.

Output voltages are internally by laser trimming technologies. It is selectable in 0.1V increments within a range of 1.2V to 5.0V.

SOT-23, SOT-89, TO-92 and USP-6B packages are available.

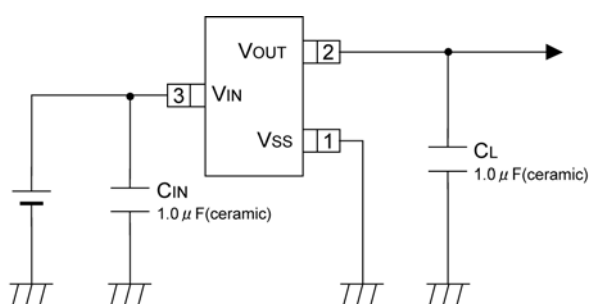
■ APPLICATIONS

- Smart phones / Mobile phones
- Portable game consoles
- Digital still cameras / Camcorders
- Digital audio equipments
- Reference voltage sources
- Multi-function power supplies

■ FEATURES

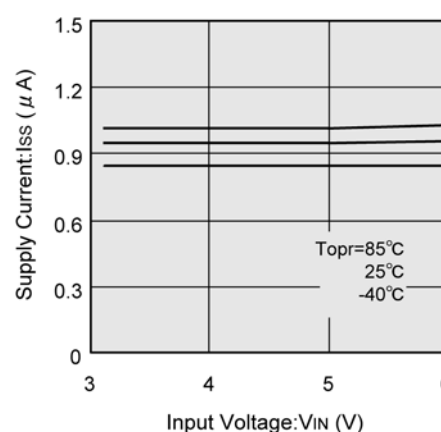
Maximum Output Current	: 200mA (3.0V type)
Dropout Voltage	: 250mV @ 100mA (3.0V type)
Maximum Operating Voltage	: 6.0V
Output Voltage Range	: 1.2V ~ 5.0V (0.1V increments)
Highly Accurate	: $\pm 2\%$ @ $V_{OUT} \geq 1.5V$ $\pm 30mV$ @ $V_{OUT} < 1.5V$ $(\pm 1\% \text{ @ } V_{OUT} \geq 2.0V)$
Low Power Consumption	: 1.0 μ A (TYP.)
Low ESR Capacitor	: Ceramic capacitor compatible
Protection	: Current Limit Circuit Built-in
Operating Ambient Temperature	: -40°C ~ +85°C
Packages	: SOT-23 SOT-89 TO-92 USP-6B
Environmentally Friendly	: EU RoHS Compliant, Pb Free

■ TYPICAL APPLICATION CIRCUIT



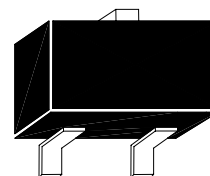
■ TYPICAL PERFORMANCE CHARACTERISTICS

XC6206P302



Low Dropout CMOS Voltage Regulators

LM6206N3



SOT-23

Product Description

The LM6206N3 series is a set of three-terminal high current low voltage regulator implemented in CMOS technology. They can deliver 250mA output current and allow an input voltage as high as 6.5V. CMOS technology ensures low voltage drop and low quiescent current. They are available with several fixed output voltage ranging from 1.5V to 3.3V. In addition, output voltage can be set internally. It is selectable in 0.1V increments within a range of 1.5V to 3.3V.

Features

- Low dropout voltage
- Maximum output current 250mA
- Output voltage : 1.5V~3.3V (0.1V increments)
- Output voltage accuracy : tolerance $\pm 2\%$
- Low temperature coefficient

Applications

- Battery powered equipment
- Reference voltage sources
- Cameras and video cameras
- Portable AV systems
- Communication tools
- Portable games

Absolute Maximum Ratings

Parameter	Symbol	Ratings	Units
Input Voltage	V_{IN}	6.5	V
Output Current	I_{out}	250	mA
Continuous Total Power Dissipation	P_D	150	mW
Operating Ambient Temperature	T_{OPR}	-40 ~ +85	$^{\circ}C$
Storage Temperature	T_{STG}	-50 ~ +125	$^{\circ}C$

